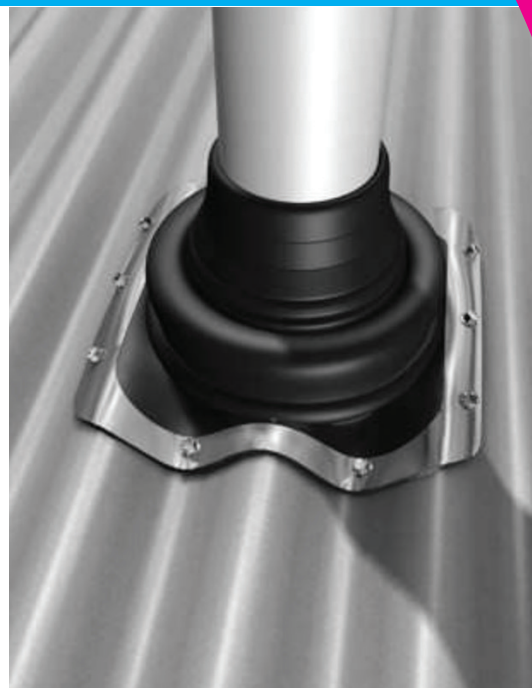
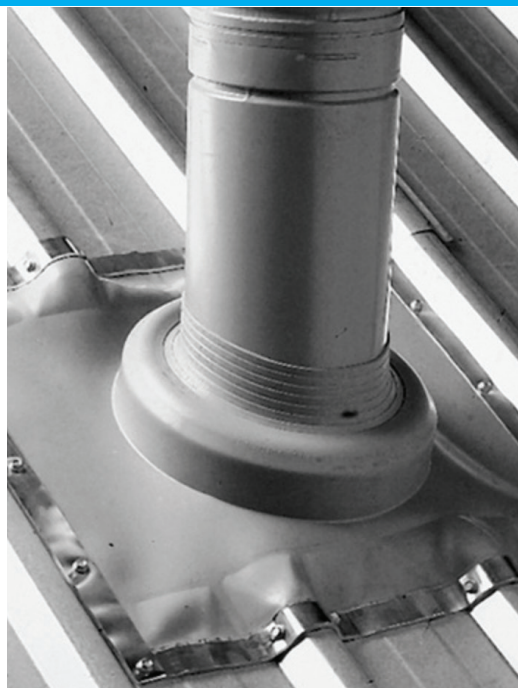




MASONS
Designed Smart, Built Tough.

NEW!

Roof Boot Flashings



MULTIPLE SIZES IN RANGE

Fits any pipe penetration



EPDM RUBBER AND RED SILICON

To withstand varying temperatures

ABC

EASY TO INSTALL

Fits round or square fittings



FOR FLASHING PIPES ON HORIZONTAL CLADDINGS TOO



GUARANTEED FOR UP TO 15 YEARS

Masons Roof Boot Flashings are designed for building applications where a pipe or building service penetrates the roof of a building.

When installed the roof boot flashings create a weathertight seal between the service pipe and the building roof.

AVAILABLE IN MULTIPLE SIZES 0-300MM

And either EPDM Rubber or Red Silicon

EPDM withstands temperatures from -50 °C to 115 °C and up to 150 °C intermittently.

Silicon withstands temperatures from -60 °C to 200 °C and up to 250 °C intermittently.

When a square fitting is required add **30%** to the diameter of the pipe and cut accordingly.



100mm round = **314mm**
circumference



100mm square = **400mm**
perimetre

400mm = 30% more than 324mm

Appraised by



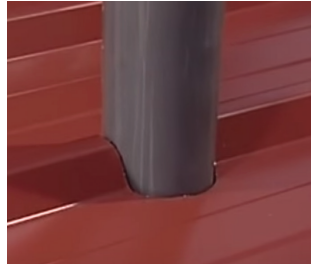
LES BOULTON & ASSOCIATES LIMITED





Roof Boot Installation Instructions

1 Cut a hole in the roof cladding slightly larger than pipe. Support hole with additional framing if necessary. Insert pipe into hole. Trim cone of Roof Boot with sharp snips for a snug fit on the pipe.



2 Slide the Roof Boot down over the pipe. Moisten the pipe to overcome friction and slide the Roof Boot down into position.



3 Apply roof and gutter or similar neutral cure silicone to the underside of the Roof Boot flange.



4 Press flange onto roof cladding and silicone. Mould to shape easy out any creases. Don't over stretch the billowed cone adjust the fit on the pipe as required. Leave some 'give' in the flexible cone to allow for minor movement.



5 Use self drilling washered screws or sealed rivets to fasten the Roof Boot to the cladding.



6 Finish by applying a continuous bead of silicone to the edge of the flange and smooth off.



NOTE: For more effective drainage, always fit the Roof Boot 45° to the fall, or diamond fashion.

Masons Code	Description	Pipe Size (mm)	Base Size (mm)
RBFBE 0-20MM	Roof Boot Flshg 0-20mm Blk EPDM	0-20	57x57
RBFBE 0-35MM	Roof Boot Flshg 0-35mm Blk EPDM	0-35	100x100
RBFBE 110-170MM	Roof Boot Flshg 110-170mm Blk EPDM	110-170	283x283
RBFBE 130-230mm	Roof Boot Flshg 130-230mm Blk EPDM	130-230	305x305
RBFBE 160-220MM	Roof Boot Flshg 160-220mm Blk EPDM	160-220	360x360
RBFBE 160-300MM	Roof Boot Flshg 160-300mm Blk EPDM	160-300	445x445
RBFBE 5-120MM	Roof Boot Flshg 5-120mm Blk EPDM	5-120	215x215
RBFBE 5-55MM	Roof Boot Flshg 5-55mm Blk EPDM	5-55	135x135
RBFBE 50-70MM	Roof Boot Flshg 50-70mm Blk EPDM	50-70	175x175
RBFBE CN 0-35MM	Roof Boot Flshg 0-35mm Blk EPDM Cble Nipples	0-35	92x92
RBFBERF 20-70MM	Roof Boot Flshg 20-70mm Blk EPDM Retro Fit	20-70	160x160
RBFRS 0-35MM	Roof Boot Flshg 0-35mm Red Silcn	0-35	100x100
RBFRS 110-170MM	Roof Boot Flshg 110-170mm Red Silcn	110-170	283x283
RBFRS 130-230MM	Roof Boot Flshg 130-230mm Red Silcn	130-230	305x305
RBFRS 160-220MM	Roof Boot Flshg 160-220mm Red Silcn	160-220	360x360
RBFRS 160-300MM	Roof Boot Flshg 160-300mm Red Silcn	160-300	445x445
RBFRS 5-120MM	Roof Boot Flshg 5-120mm Red Silcn	5-120	215x215
RBFRS 50-70MM	Roof Boot Flshg 50-70mm Red Silcn	50-70	175x175
RBFRSCN 0-35MM	Roof Boot Flshg 0-35mm Red Silcn Cble Nipples	0-35	98x98
RBFRSCN 5-55MM	Roof Boot Flshg 5-55mm Red Silcn Cble Nipples	5-55	137x137
RBFRSRF 20-70MM	Roof Boot Flshg 20-70mm Red Silcn Retro Fit	20-70	153x153